



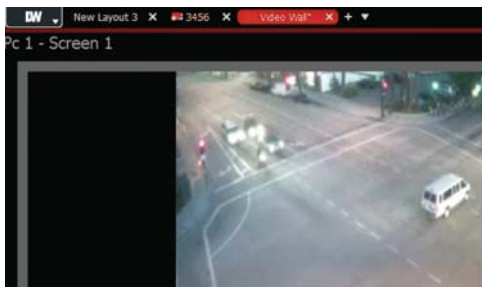
## DW Spectrum™ Video Wall. You're in Control.

Control large video walls and drive remote monitors from any DW Spectrum™ client.

### Remote Monitor Control

DW Spectrum™ Video Wall lets users remotely control single or multiple monitor installations remotely, in real-time, over LAN or WAN connections.

Using DW Spectrum™ Video Wall, users can choose to push individual video streams, layouts and even their entire stream to any monitor, any time, anywhere in real-time.



### Add It At Any Time

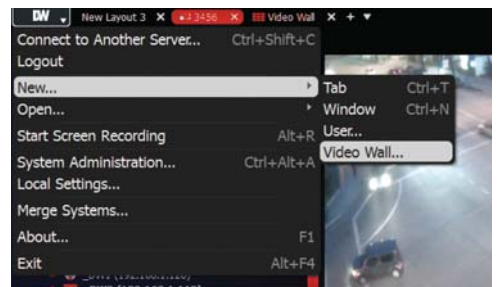
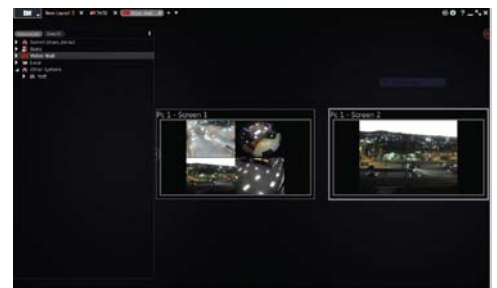
Video Wall is built-in to every version of DW Spectrum™ and works with Windows or Ubuntu Linux computers.

### Infinitely Scalable

From one monitor and one operator to hundreds of monitors and multiple operators, scalability is simple to implement and use.

DW Spectrum™ users can customize and scale Video Wall to their needs with simple, affordable licensing for every size video wall or remote monitor configuration.

DW Spectrum™ users can activate Video Wall at any time, any stage of a project, and deploy it only where it is needed - control rooms, spot-monitors, and more!



# DW Spectrum™ Video Wall.

## Remote Monitor Control

Send single video streams, entire layouts, server health monitoring statistics, or cast your workstation to any number of monitors running the DW Spectrum™ Video Wall application.

## Intuitive & Simple

DW Spectrum™ Video Wall is simple and Intuitive to use - taking just minutes to deploy and begin using.

## Multiple Operators

DW Spectrum™ Video Wall allows multiple operators to control the video wall concurrently.

## Works via LAN or WAN

As Video Wall is built right into DW Spectrum™ and sits on the DW Spectrum™ server architecture, it has the ability to control monitors both locally and remotely through connected systems.

That means users can control monitors anywhere in the world.

## Any Size System

DW Spectrum™ Video Wall is available on any DW Spectrum™ system (v2.3 and later) - from one monitor to hundreds of monitors - the solution works right out of the box.

## Cross Platform Control

DW Spectrum™ Video Wall can be created and controlled from any DW Spectrum™ thick client application - on Mac, Windows or Ubuntu Linux.

## Built Into DW Spectrum™

Video wall is built-in to every version of DW Spectrum™ and is ready to be deployed at any time.

## Free to Try

Want to try out DW Spectrum™ Video Wall before you buy it? No problem - contact us today to learn more!

# DW Spectrum™ IP Video Management Suite.

## Advanced IP Video Management. For Everyone.

### Simple Setup

Traditional IP Video Management software takes hours, if not days, to set up. With automatic camera and server discovery - and installers for Windows®, Linux® and Mac® operating systems - DW Spectrum™ takes just minutes to download, install and configure.

DW Spectrum™ supports any ONVIF or RTSP-enabled device. Users can detect, capture, and control thousands of existing IP video capture devices.

### Easy to Maintain

DW Spectrum™ has free upgrades for life, an online support portal, and an industry-first one-click system-wide upgrade features that makes keeping your system up-to-date simple and painless.

### Built for Users™

Designed to be instantly usable, DW Spectrum™ has a revolutionary flexible drag & drop user interface that has redefined how the industry approaches live and recorded video management. Skip the training - save money and time - with DW Spectrum™.

### Open for Developers

DW Spectrum™ has a comprehensive SDK and API - accessible at any time through the DW Spectrum™ server web admin page.

- view & control any video stream via the SDK.
- integrate with any 3rd party system via the API.

### Enterprise Features are Standard

Unlike our competitors, DW Spectrum™ has consistent, powerful features regardless of the size of system.

Enterprise features like Automatic Failover, EDGE camera support, and Server Health Monitoring come standard on every installation.

### Try it for Free

Want to try out DW Spectrum before you make a decision? Download DW Spectrum for free at <http://www.digital-watchdog.com> today and get a free 30 day trial (all features included).

### Supported Operating Systems

- Windows® XP or later.
- Ubuntu Linux® 12.04 or later.
- Mac® OSX 10.6 or later (client only)



### DW Spectrum™ Version 4.0 Features

#### Supported Devices & Manufacturers



- Any ONVIF Profile S Device.
- Any RTSP video stream.
- Digital Watchdog® MEGApix® and MEGApix® Caas™.
- See full list at [digital-watchdog.com](http://digital-watchdog.com).
- More brands and devices added on every release.

### Unique Enterprise Features

#### No Single Point of Failure

- Connect to any server in the system to view the entire system..

#### Smart Search Options

- Use any search feature you prefer - smart motion, keyword(s), time-slice, or calendar to find and share events.

#### Automatic Camera Failover

- Enable any server(s) as a failover server to create a high-reliability system.

#### Universal Fisheye Dewarping

- Automatically or manually detect and dewarp any fisheye lens - including panamorph lenses.

#### Server Health Monitoring

- Drag & Drop servers onto flexible grid interface to view CPU, network, memory, and HDD status.

#### Advanced Video Export

- Export single or multiple video events into standard or executable format.

**SCHEDULE A  
DEMO TODAY**

Learn how Digital Watchdog will increase your profitability today.

