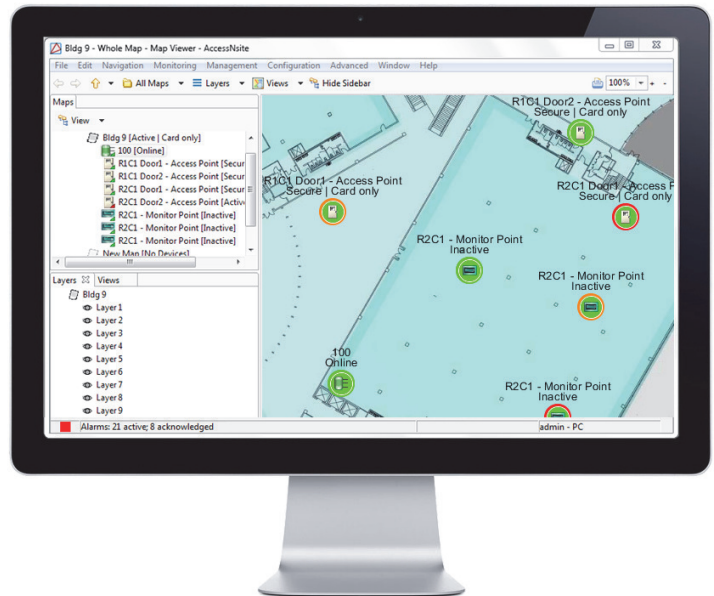




Event Photos Module



Map Viewer Module



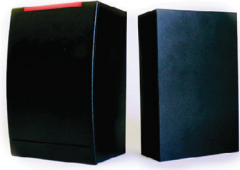
Use true open architecture for your security solution

Quintron's next generation AccessNsite® software brings true meaning to the term Open Architecture. AccessNsite will run on a variety of operating systems including Windows, Linux, OSX, and others. You can choose from a variety of databases in which to store your valuable data such as Microsoft SQL Server, Oracle, MySQL, and HSQLDB. And your choices don't stop there. AccessNsite manages "best of breed" access control and intrusion hardware platforms such as Mercury, HID, DMP, and others.

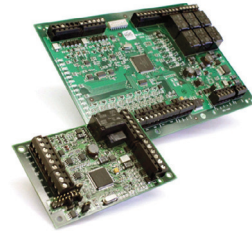
AccessNsite was written from the ground up as a Java application giving it unlimited system scalability, flexibility, and reliability. The user interface is intuitive to help you get the job done fast. Due to its object-oriented design, alarms and events aren't just static information any more. Right-click on an "Access Denied" event and go directly to the badge record to see the assigned access rights. You

can setup permissions on each login for granular control of what your users are allowed to do. Run simple reports from the information you are currently looking at, or create more complex reports against the entire database using the Reports module. Create maps of your facility and manage your alarms graphically. Drill down from a campus view, to a building view, to the actual room on the floor plan where the alarm is occurring. The modular design allows you to place windows where you want, even on multiple monitors.

AccessNsite is designed to answer a wide array of needs from the small business to the large enterprise. Make use of everything from database partitioning for managing multi-tenant buildings, to our web client to manage your site remotely, or even our Enterprise Communicator to transfer badge records between multiple sites within an enterprise. AccessNsite is the total solution.



AccessNsite®



AccessNsite® is a cross-platform (Windows, Unix, Linux, and Mac) and database independent modular access control solution. With AccessNsite, any facility, large or small can be protected.

Navigation

A simplified and intuitive user interface, with right click capability enabling one-click navigation anywhere, makes for a quick and smooth workflow. The customizable Quick Launch module allows for creation of shortcut buttons for opening modules, displaying device status, issuing device commands, executing OS commands, or opening a web page.

Personnel Management

Data entry is straightforward and efficient in the AccessNsite Personnel module with simplified data entry, capture, retrieval, and reporting. Unique features include: Image capture and signature capture with chroma-key imaging capabilities; automatic enrollment using a driver's license scanner, or smart card readers; custom credential watch colors display any time a badge is used in the system; and fully customizable fields for Personnel, Badge and Temporary Badge records.

System Events and Alarms

Events and alarms are displayed in real-time with configurable priorities, line colors, alert sounds and alarm instructions. With one click, acknowledge alarms, obtain instructions, or display the alarm on a graphic map. Duplicate alarms are organized in a "count" table, increasing the count rather than scrolling new alarms. Video integration allows users to compare access event video to stored personnel images.

Graphic Maps

AccessNsite features an unlimited number of vector-based graphical maps with zoom and crop capabilities allowing for enhanced scaling features. SVG, PNG, JPG, and BMP file formats are supported, with fully customizable device, command, and location icons. Maps include multiple user defined layers with customizable "map views" which highlight specific sections of saved maps. Devices, commands, locations, and map links are all plotted using a simple drag-and-drop functionality. Alarm activity and device status are displayed and can be controlled directly from the device icon on the map.

Hardware Configurations

AccessNsite brings multiple hardware platforms together into the same cohesive application. Hardware is defined within the application using wizards which can be customized. Devices can be viewed and sorted by address, name, or hierarchical location within your facility. Right-click devices to issue commands, view recent events, or view device audits. Easily find your devices within the hardware tree using our quick search capability.

Camera Supervision

The Camera Manager module allows for operators to control cameras with built in controls. Device and camera linking captures and tracks all events and alarms with video. The External Digital Video Recorder module allows for custom DVR's to be added to the system. Cameras can be assigned to pre-defined presets for PTZ cameras.

Advanced Capabilities

Automate the system with custom automation rules triggered from events, time schedules, or from manual commands. Automation rules can be configured to execute device commands, personnel and badge group edits, reports, CSV imports and/or external commands. Send event results and notifications using email, FTP or Sys Log. Partitioning the system allows for complete management of multi-tenant buildings while also allowing individual departments within an organization to manage their own data. Create and edit badge designs with the integrated Badge Designer module. The web client allows you to run AccessNsite in any modern web browser. The Enterprise Communicator enables data distribution transferring personnel and badge records between multiple sites in an enterprise. Integrate any peripheral application into AccessNsite using our API.

System Monitoring Tools

Monitor system activity, alarms, and safety reports in the AccessNsite Dashboard module. Built-in system monitoring tools allow operators to view real-time events occurring in the system in graphical form. Drill down actions allow operators to get specific information from charts and graphs.